

Climbing up hill

Opp. Day Mar 28th, 2016



What we did....

Table shows the P&L in 2015

	(‘000 Baht)
	2015
Total Revenue	273,233
EBITDA	34,475
Net Profit*	25,919

The rationale we did not meet the targets

- MSW Power Plant Hat Yai
 - Upgrade to the capacity from 4.3 MW to 5.4 MW
 - Protecting from TOT Public Company Limited'
- Biomass Power Plant Sa Kaew
 - Upgrade for uptaking RDF instead of wood chips and barks

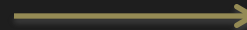


Wood chips

+



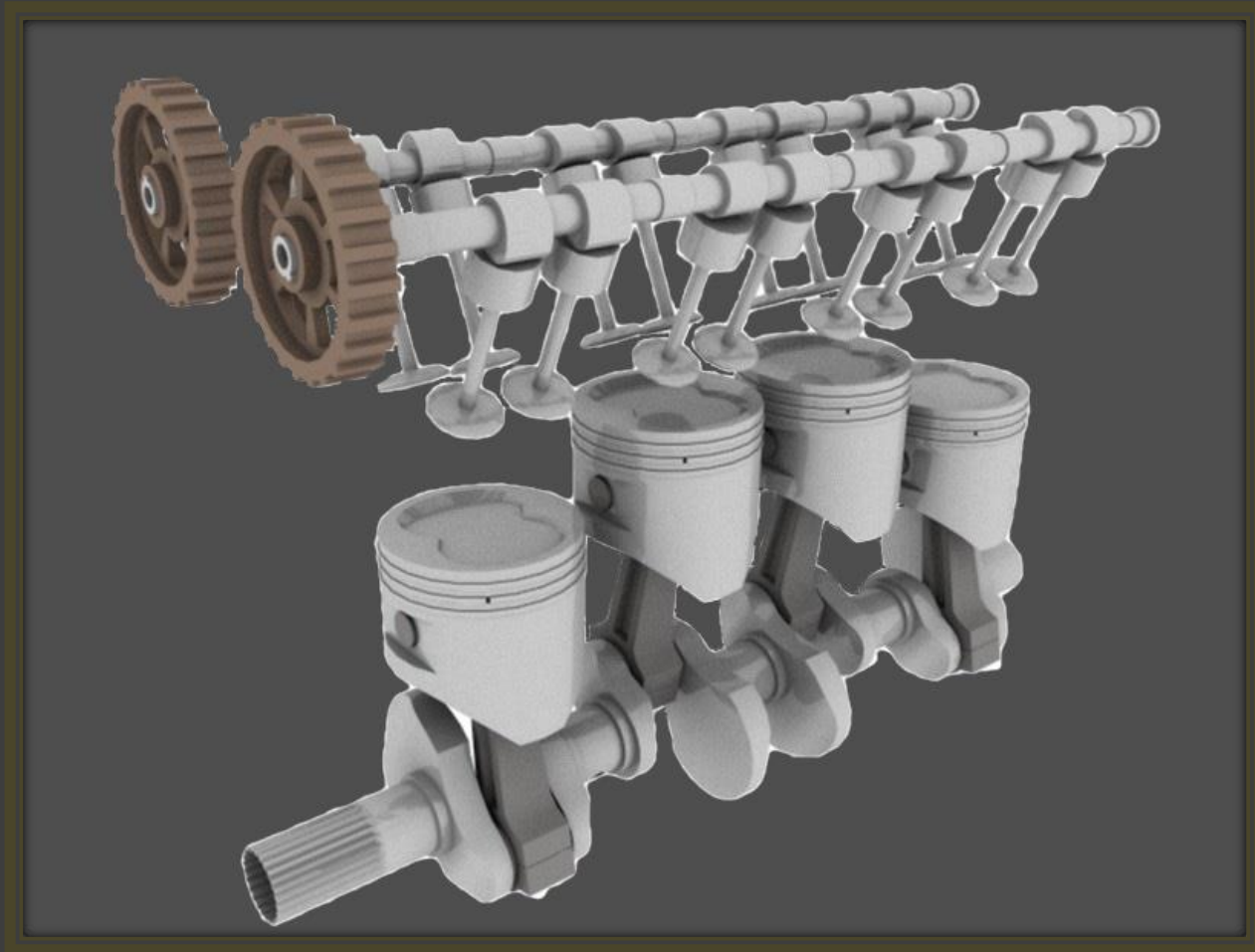
Barks



Climbing up hill



Four cylinders with supercharged engine



1st cylinder:

Solar Power Plants...The Steady Income



The Three Solar Power Plants

Power plant	COD	Location	Owned by IEC	PPA (MW)	Installed capacity	Revenue/M (MB)*
Solar Power Plant						
Mae Ramat	Dec-13	Tak	100%	5.25	6.3	7.1
Mae Tha	Sep-13	Lumpoon	100%	1.92	2.6	3.3
Mae Malai	Jun-14	Chiang Mai	100%	1.92	2.3	3.3
				<u>10.15</u>	<u>11.2</u>	<u>13.7</u>



2nd cylinder: From Biomass to Semi MSW Power Plant



2nd cylinder:

From Biomass to Semi MSW Power Plant



MSW Loading



MSW deliverables



Shredder



Wind-shifter



Trommel



Conveyor

2nd cylinder:

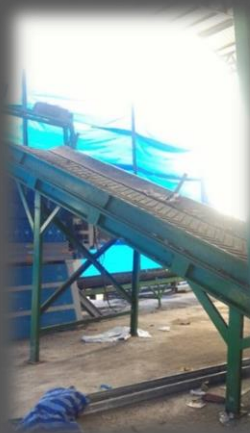
From Biomass to Semi MSW Power Plant



spinner



Buffer



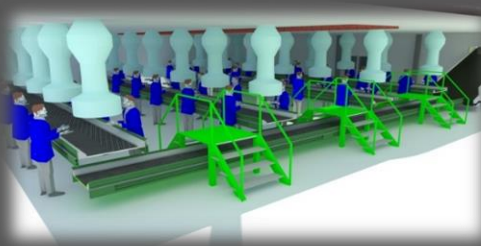
Conveyor



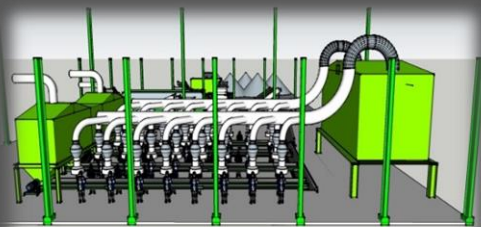
satellite Collector



Satellite collector



Sorting Room

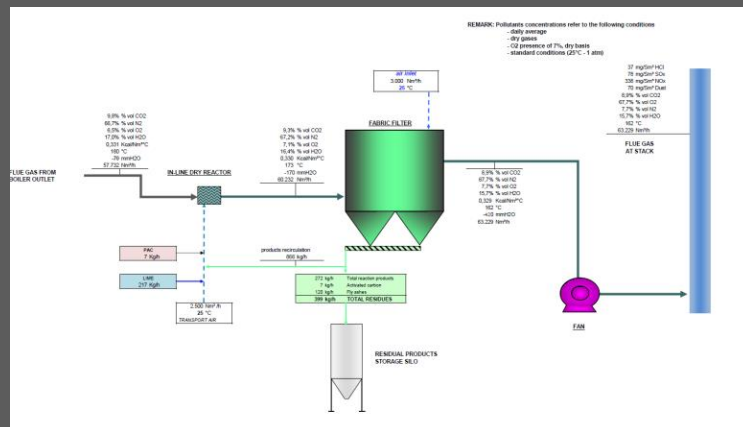


Sorting machine

2nd cylinder:

From Biomass to Semi MSW Power Plant

- CEMS Emission control system
 - High temperature De-NO_x system, SNCR type (Selective Non-Catalytic Reduction) for the NO_x content reduction
 - Dry absorption reaction system for the abatement of acid gases (Dry Neutralization)
 - Adsorption reaction system for micro pollutants (Heavy Metals and Dioxins) removal
 - Fabric Filter for the completion of gas neutralization and adsorption processes and for dust removal (Filtration)
 - NO_x, SO_x, Dioxin, Opacity Sensors



Emission Control

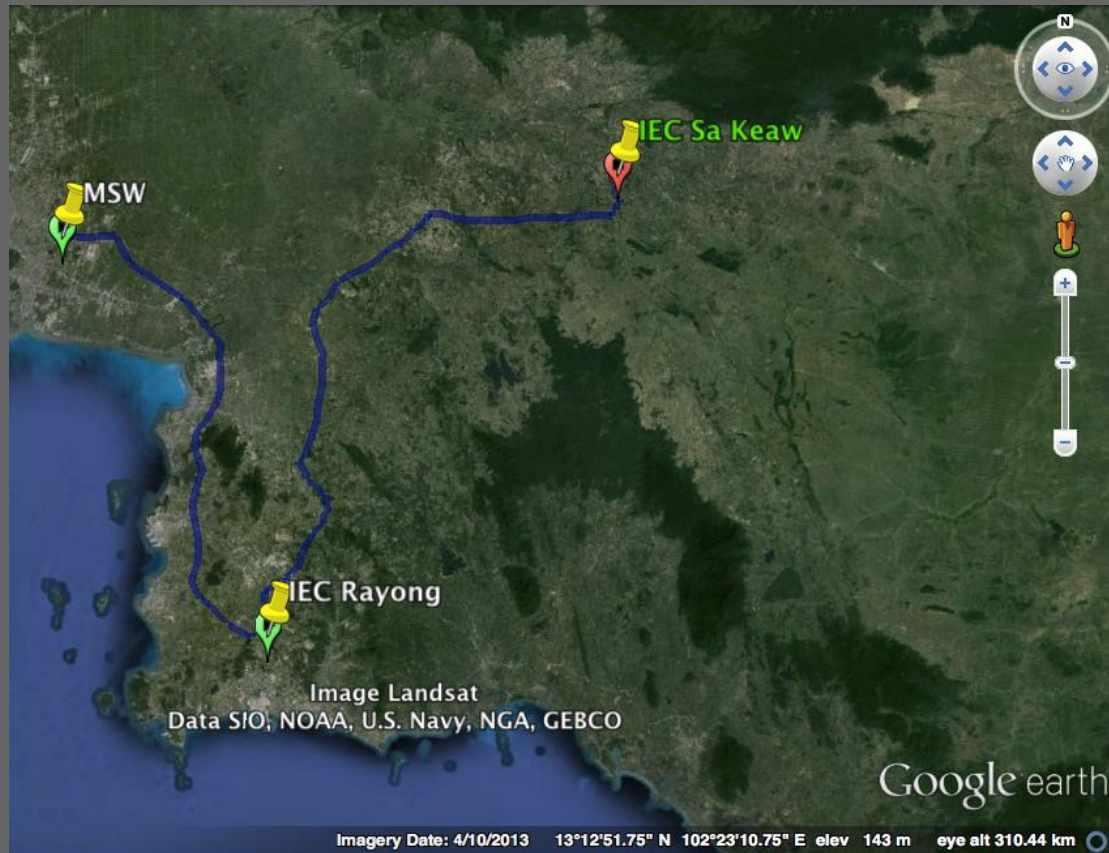


Lime Stone Filter

2nd cylinder:

From Biomass to Semi MSW Power Plant

- Route from MSW to IEC Rayong (142 km)
- Route from IEC Rayong to IEC Sa Keaw (195 km)



3rd cylinder:

The first working MSW Power Plant in Thailand



3rd cylinder:

Reaching the max. capacity (6.25 MW) of the MSW Power plant in Hat Yai

Monthly Revenue and EBITDA ('000 Baht)

	4.3 MW	5.4 MW	6.25 MW
Revenue	21,047	24,882	28,503
EBITDA	8,334	12,132	16,012



3rd cylinder:

Partnership with Yunnan Waters

Benefits:

- Sell ECGO's shares (50%) to Yunnan Waters with a premium
- Share debt financing
- JV with other MSW Power Plant projects

4th cylinder:

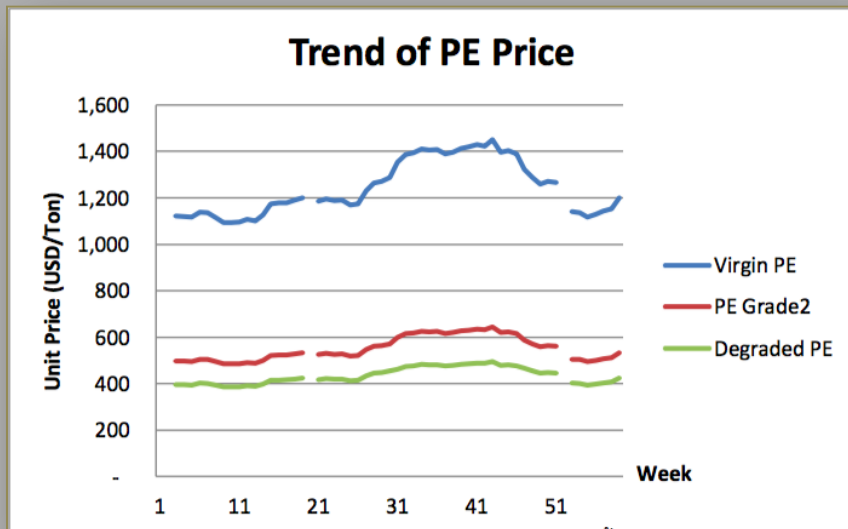
Plastic Pellets at Rayong Plant



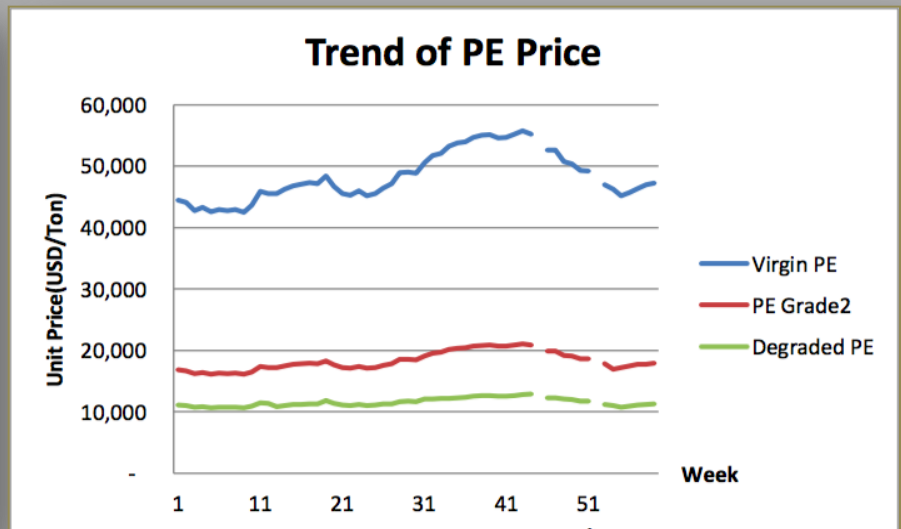
4th cylinder:

Plastic Pellets Plant at Rayong

- World Demand of plastic Pellets in 2015-16



International



Local

4th cylinder:

Plastic Pellets Plant at Rayong

What IEC can produce...

2016		2017	
Lines	Tons per year	Lines	Tons per year
6 (Q2) + 6 (Q3)	33,000	12	54,000



Results:

Four cylinders with supercharged engine

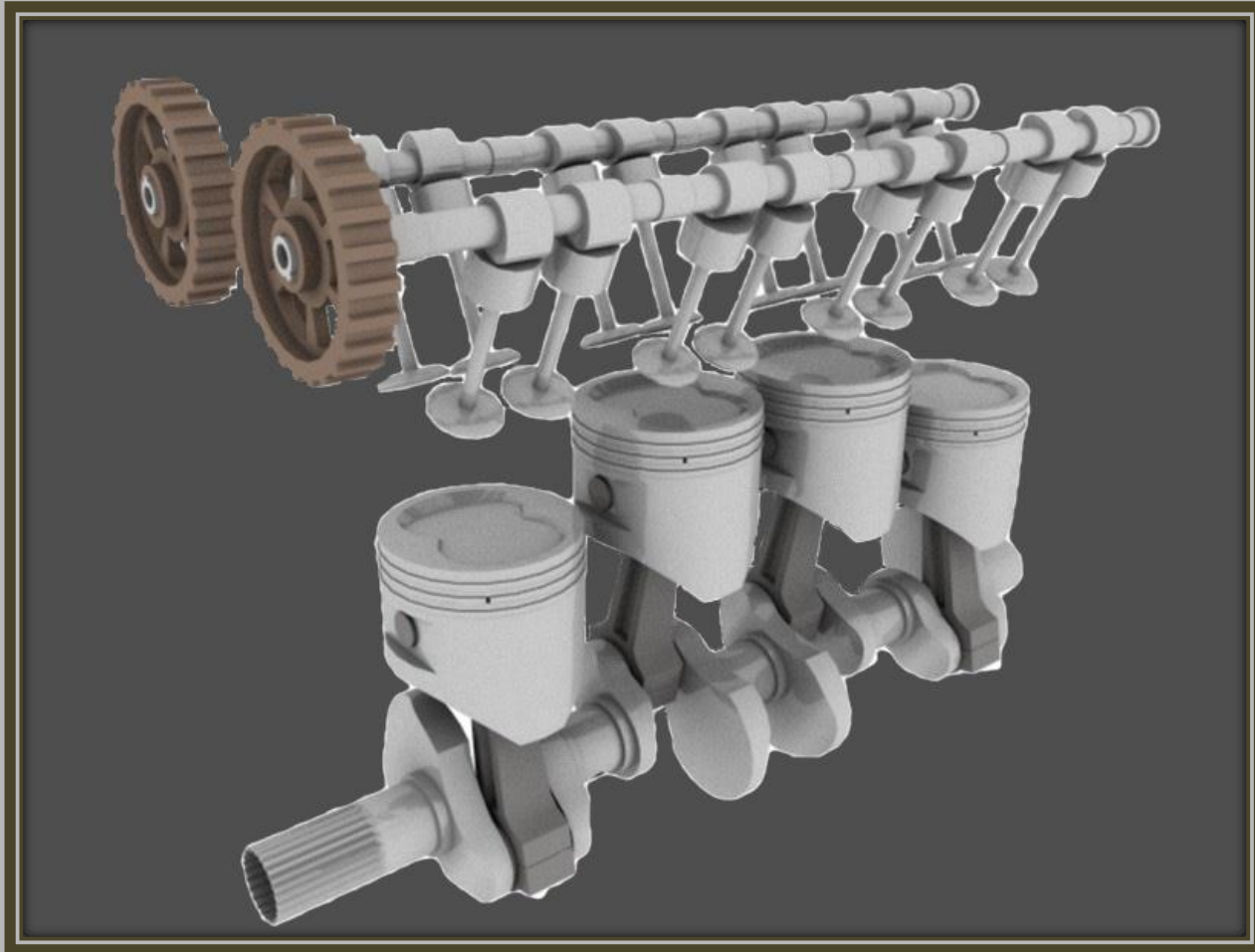
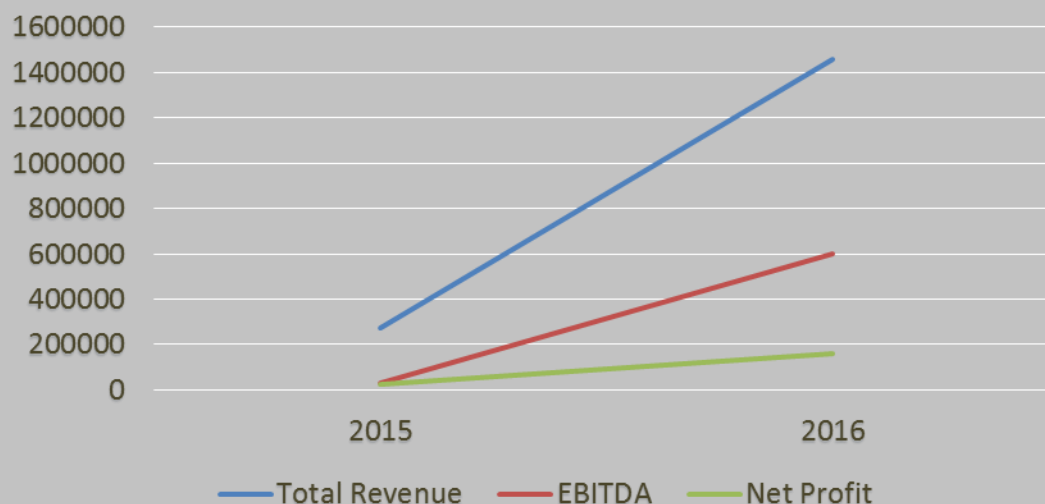


Table shows the expected P&L in 2016

('000 Baht)

	2015	2016	Growth	
			Amt.	%
Total Revenue	273,233	1,456,506	1,183,273	433%
EBITDA	34,475	600,950	570,958	1904%
Net Profit*	25,919	161,705	139,367	624%

Trends 2015-16 ('000 Baht)



Rolling Higher to continue in 2017



Biogas Plants with zero discharge in Kunchanaburi and Suphanburi



Biomass Power Plants Sa Keaw II



PPA: 9 MW

Feed-in-Tariff:

4.24 Baht/unit with premium

0.30 Baht/unit for 8 years and 2% inflation.

The Compressed Bio-methane Gas (CBG) stations at Kam Peng Phet and Aung Thong

“...No PPA is needed...”

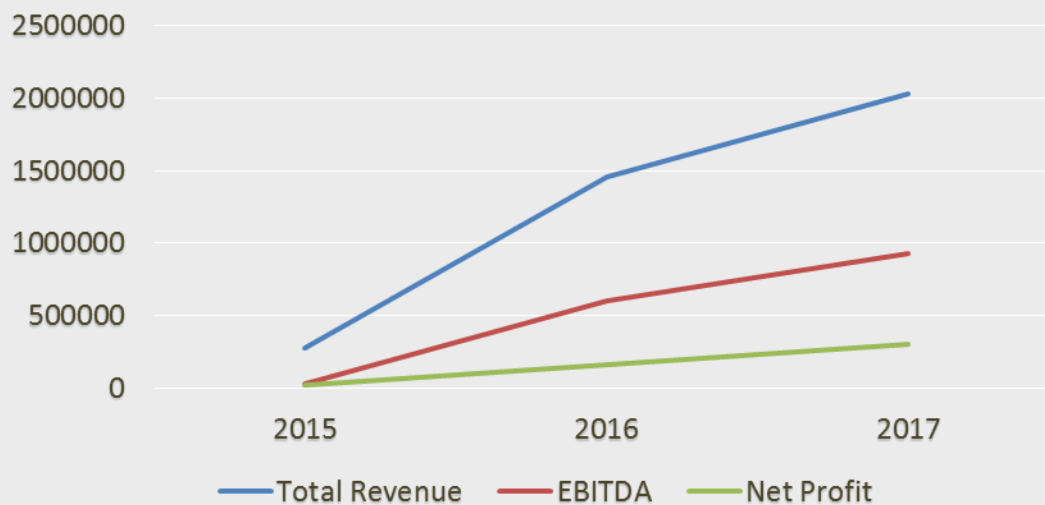


Table shows the expected P&L in 2016-17

(‘000 Baht)

	2015	2016	2017	Growth	
				Amt.	%
Total Revenue	273,233	1,456,506	2,033,912	577,406	40%
EBITDA	34,475	600,950	926,849	325,899	54%
Net Profit*	25,919	161,705	300,612	138,907	86%

Trends 2015-17 (‘000 Baht)



Expected to Award Four Stars CG



CG Thailand

Gateway to Sustainability Development for Thai Public Companies



Expected market capitalisation in 2017

25,000 Billion Baht...

